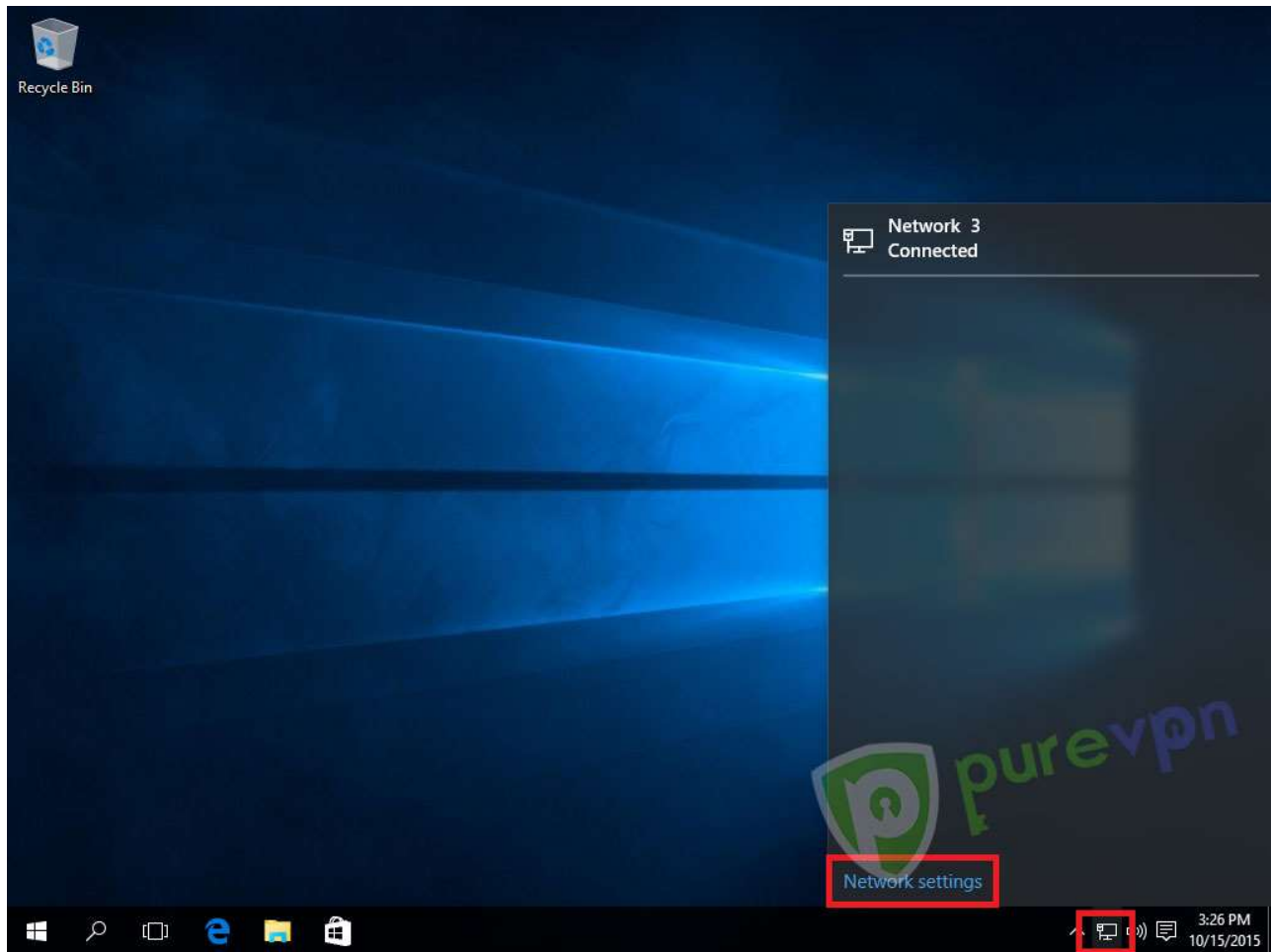
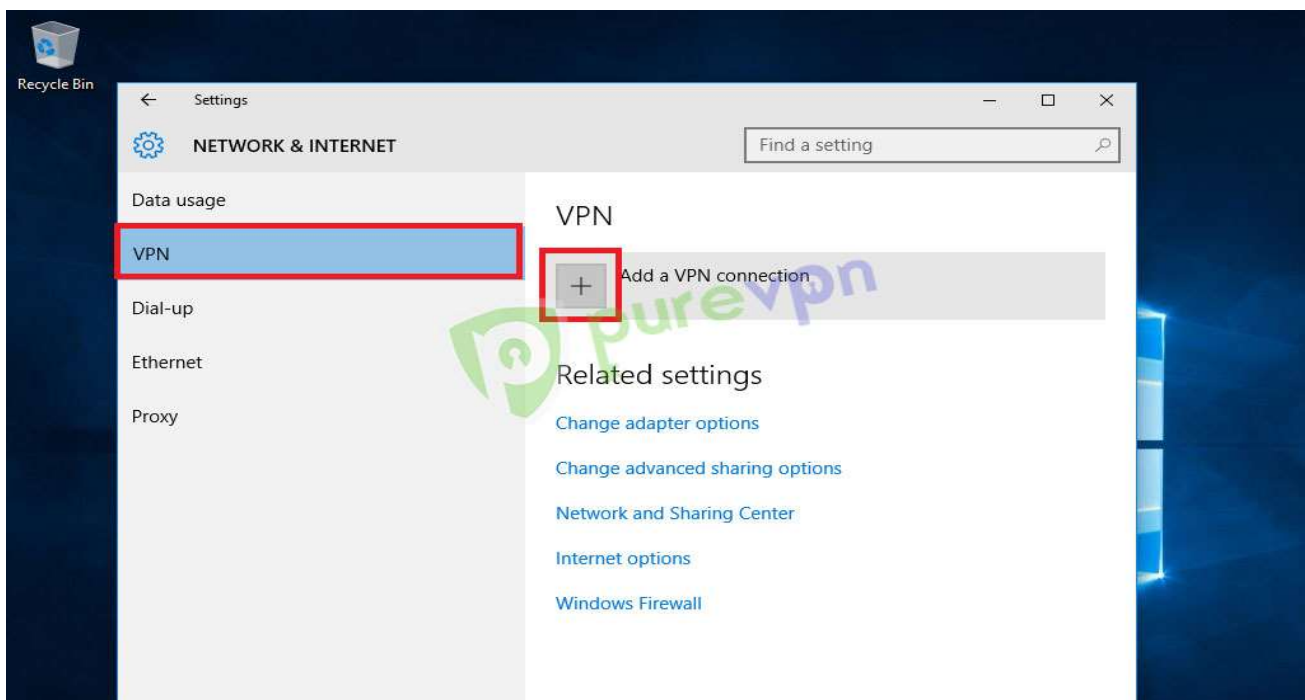


Windows IKEV2 Manual Configuration

Right click on your Active Lan / WiFi icon and click on Network settings

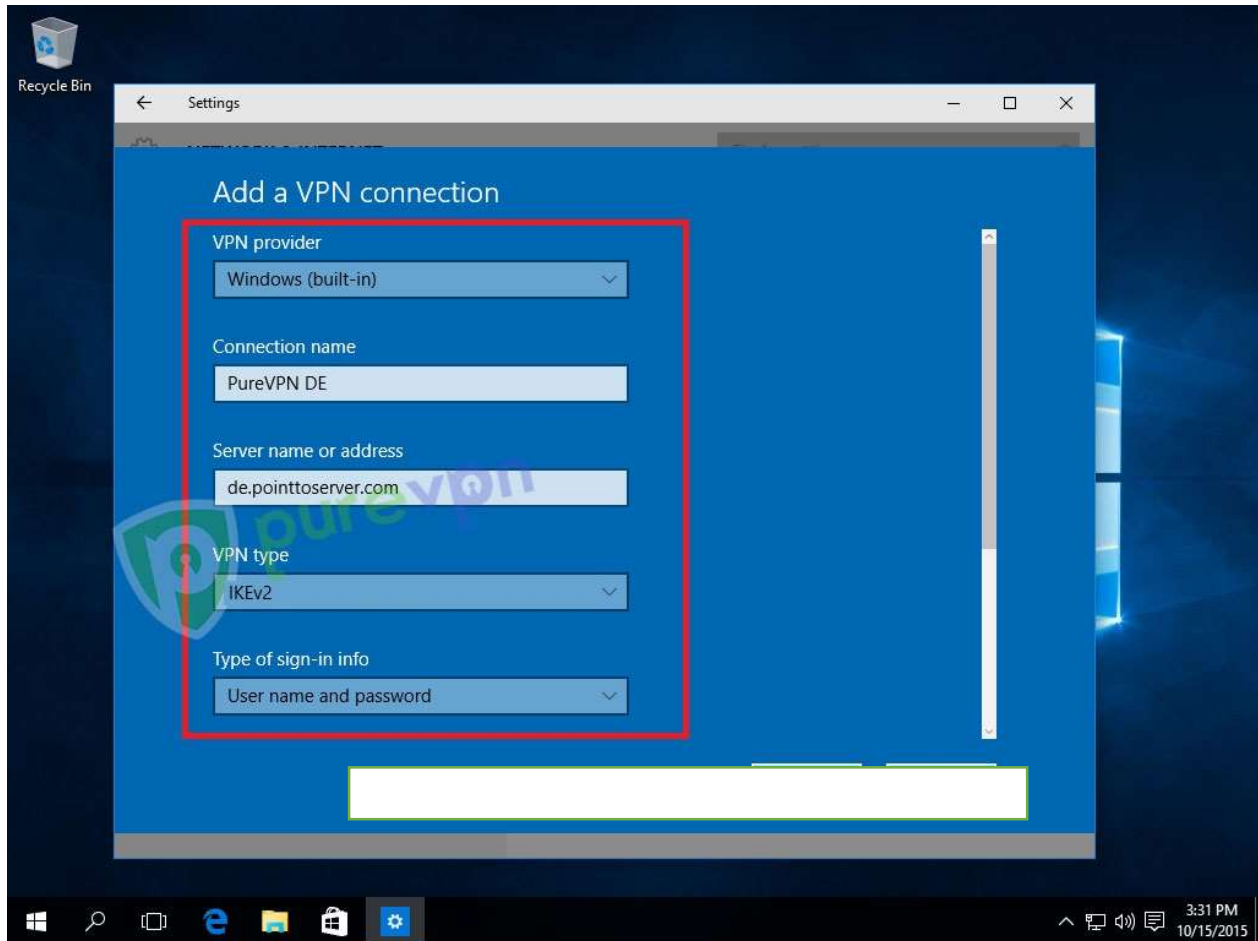


Click on VPN then click on Add a VPN connection



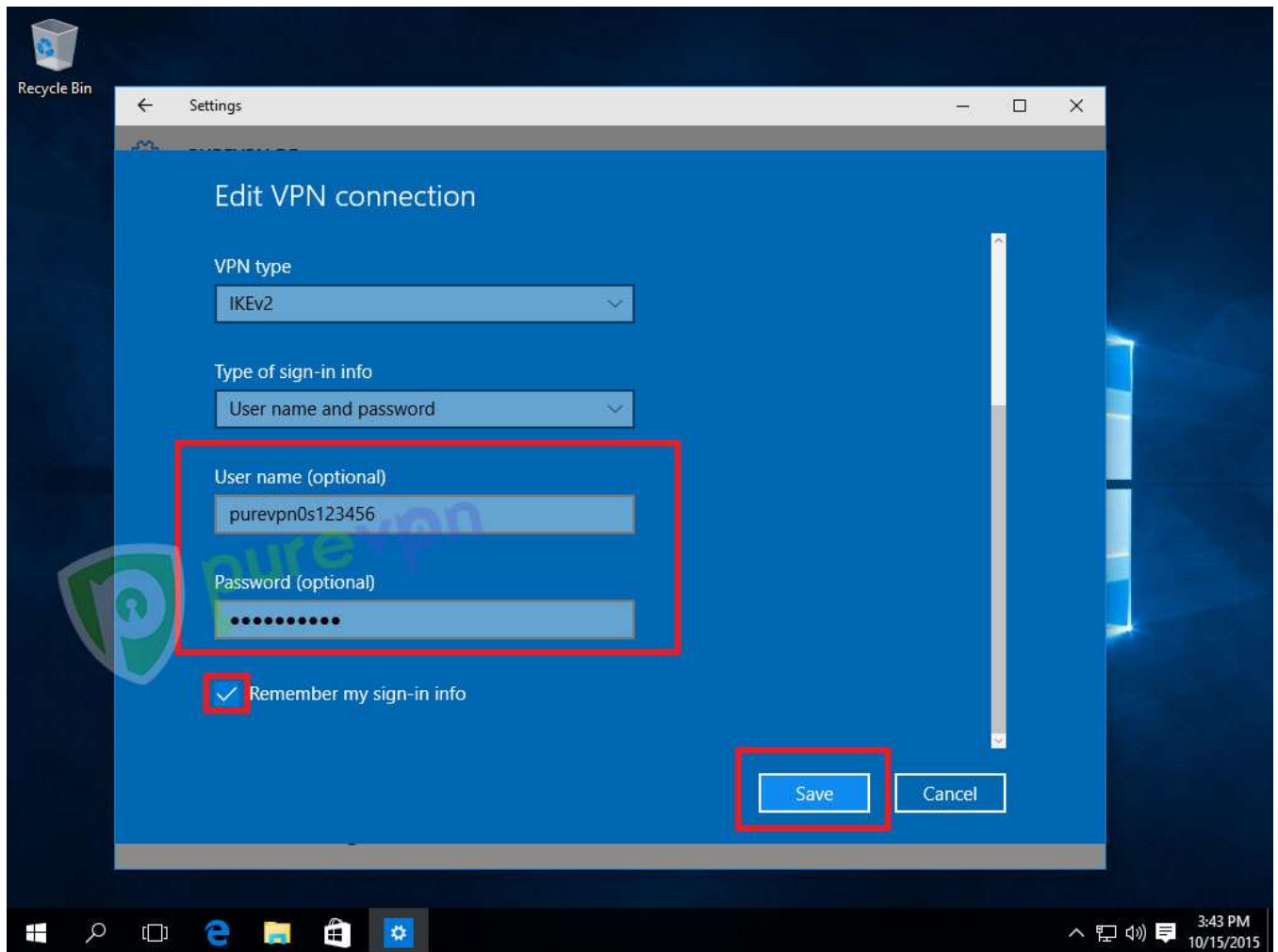
Insert the following info:

- Select Windows (built-in) from VPN Provider drop down menu
- Insert any desired Name as PureVPN DE, US etc as Connection name
- Insert desired server address in Server name or address box.
- Select "IKEv2" from VPN type drop down menu
- Select "User name and password" from Type of sign-in info drop down menu

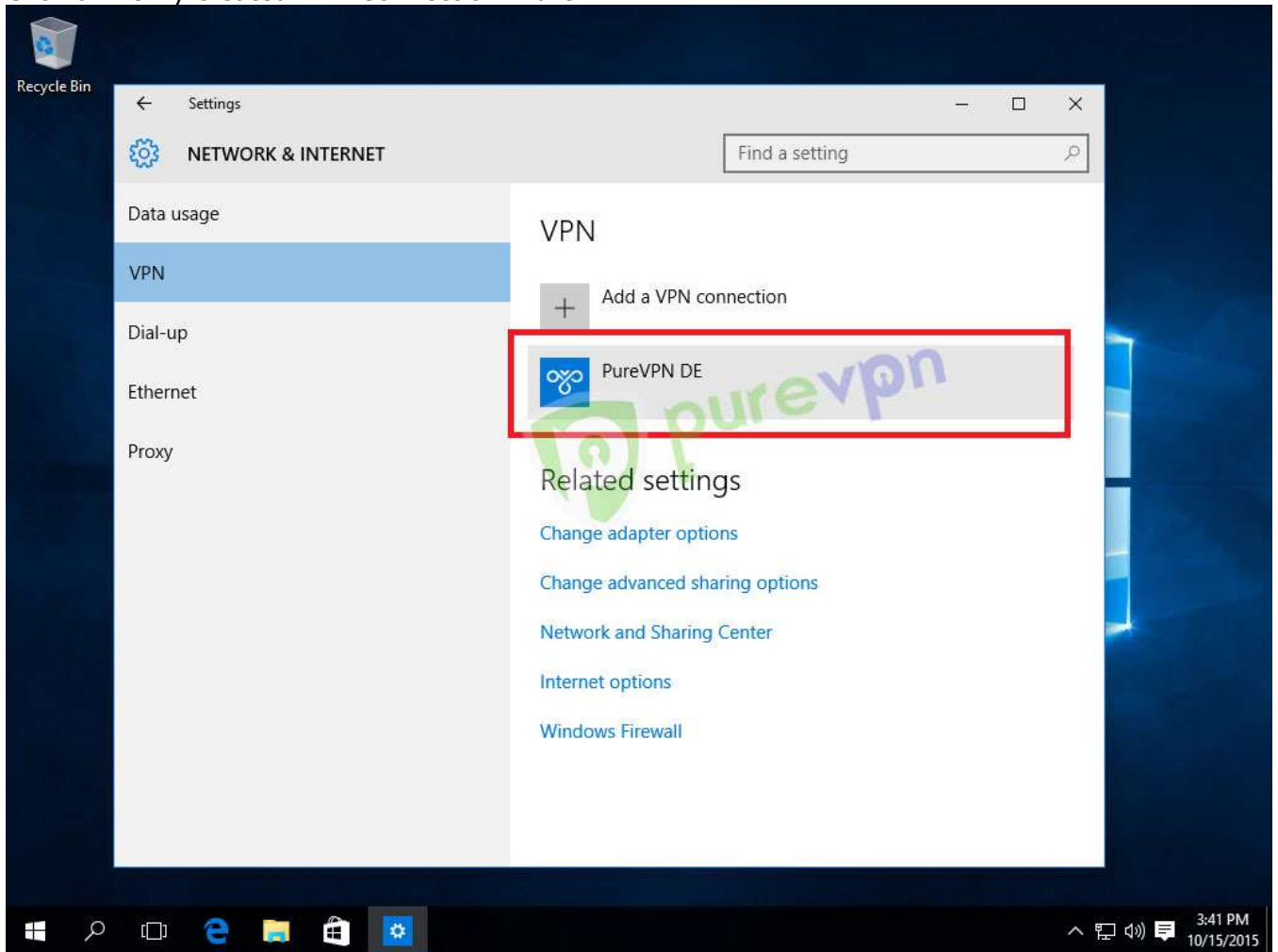


Insert the following info:

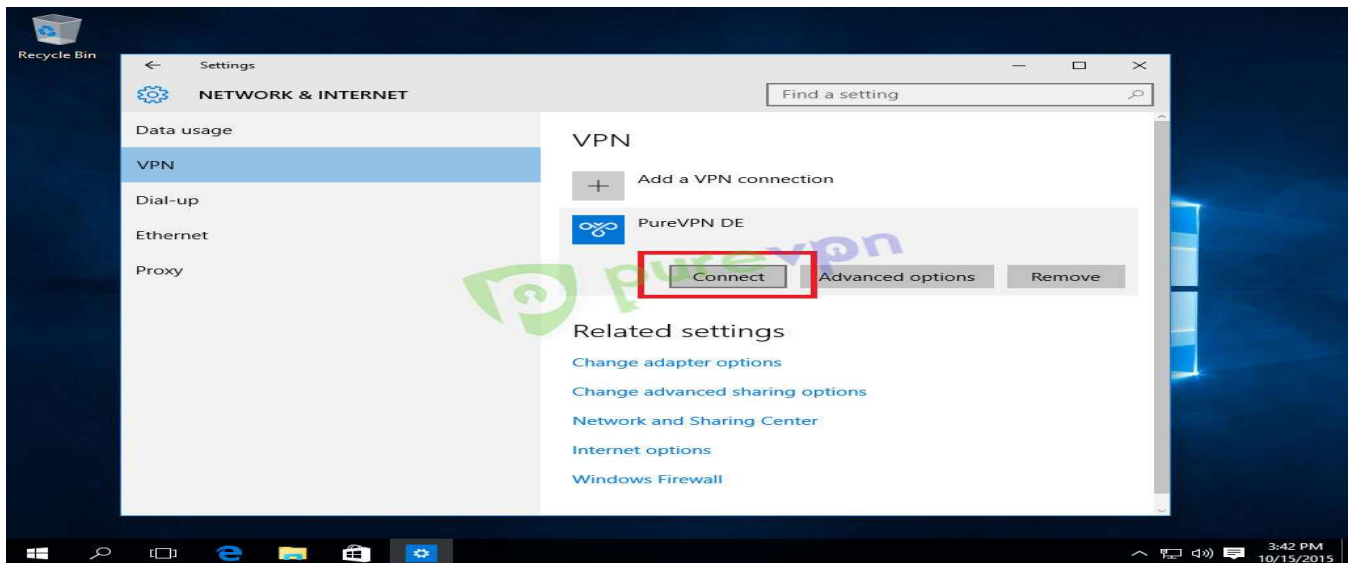
- Insert your Username and Password provided by PureVPN.
- Select "Remember my sign-in info and click on Save



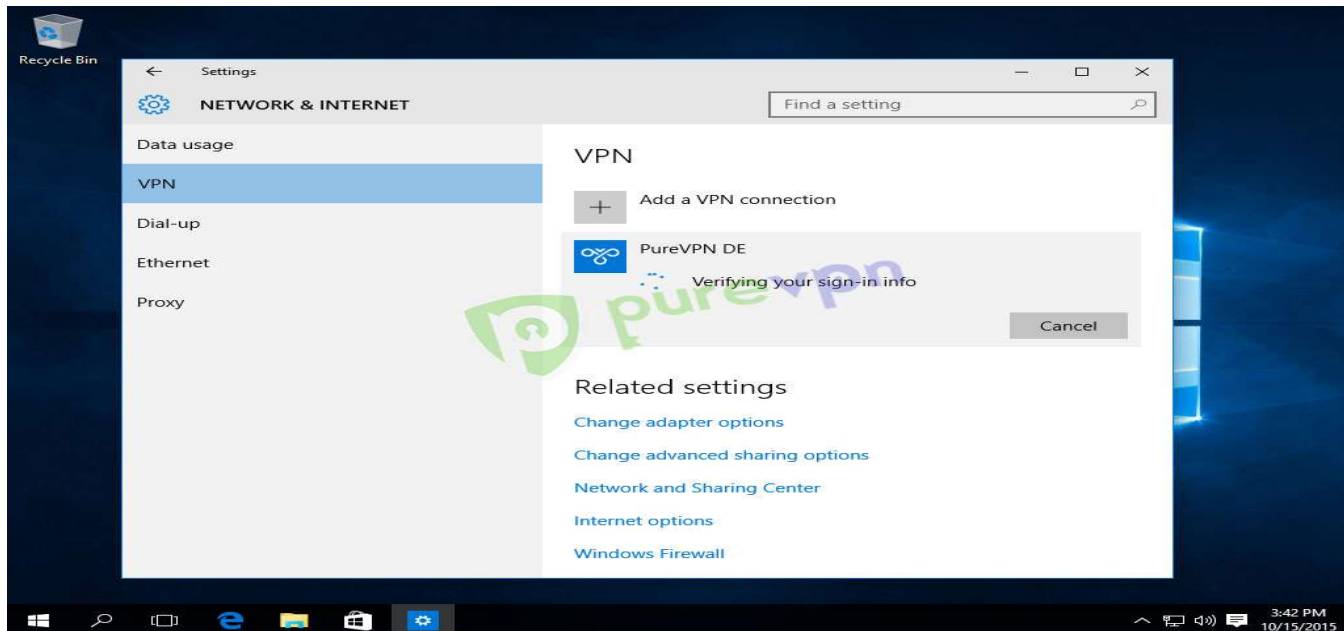
Click on newly created VPN Connection "PureVPN DE"



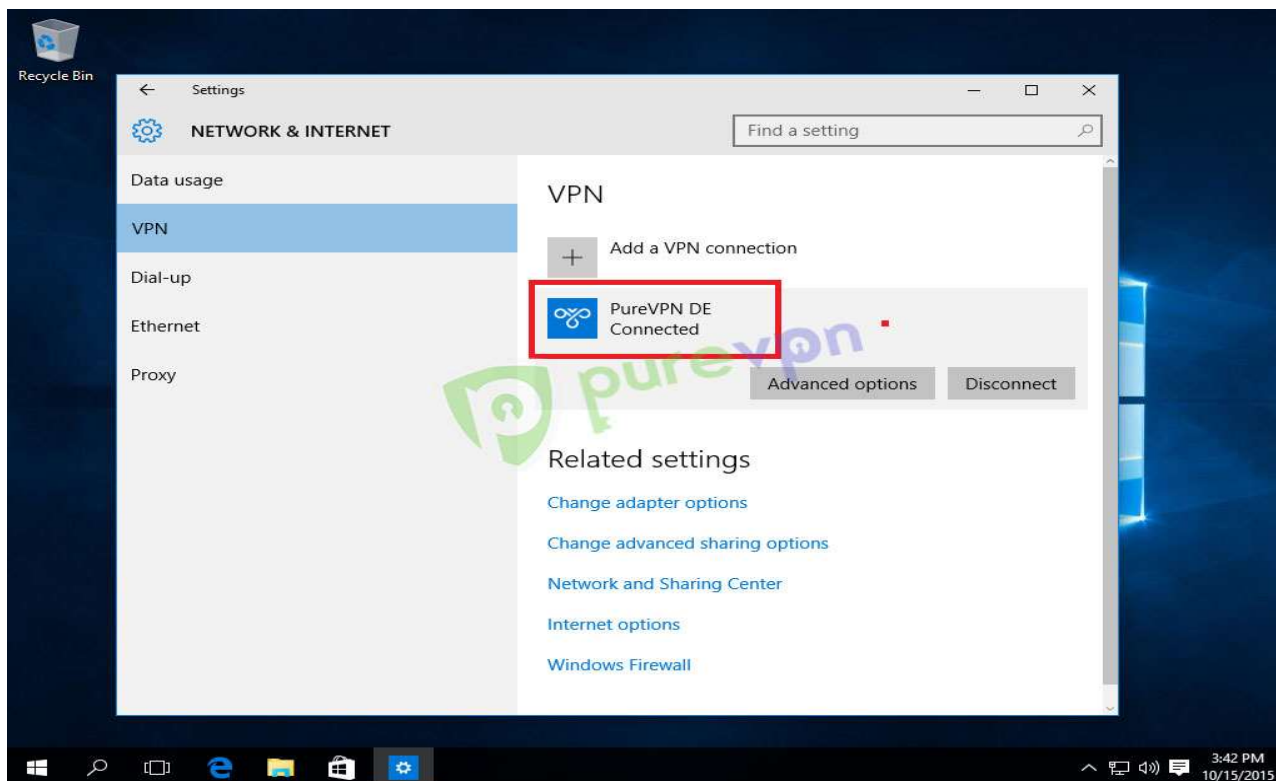
Click on Connect



Connection will establish in few seconds



You are connected to VPN Successfully. Enjoy the Pure FREEDOMMMM!!!!



Recommended Servers:

usny2-cn.sslwonders.com
uswdc2-cn.sslwonders.com
usla2-cn.sslwonders.com
usut2-cn.sslwonders.com
ussf2-cn.sslwonders.com
us2-cn.sslwonders.com
ukman2-cn.sslwonders.com
ukl2-cn.sslwonders.com
ukm2-cn.sslwonders.com
cato2-cn.sslwonders.com
nl2-cn.sslwonders.com
se2-cn.sslwonders.com
ch2-cn.sslwonders.com
my2-cn.sslwonders.com
sg2-cn.sslwonders.com
lu2-cn.sslwonders.com
au2-cn.sslwonders.com
fr2-cn.sslwonders.com
hk2-cn.sslwonders.com
it2-cn.sslwonders.com
be2-cn.sslwonders.com
in2-cn.sslwonders.com